

# Big Ben



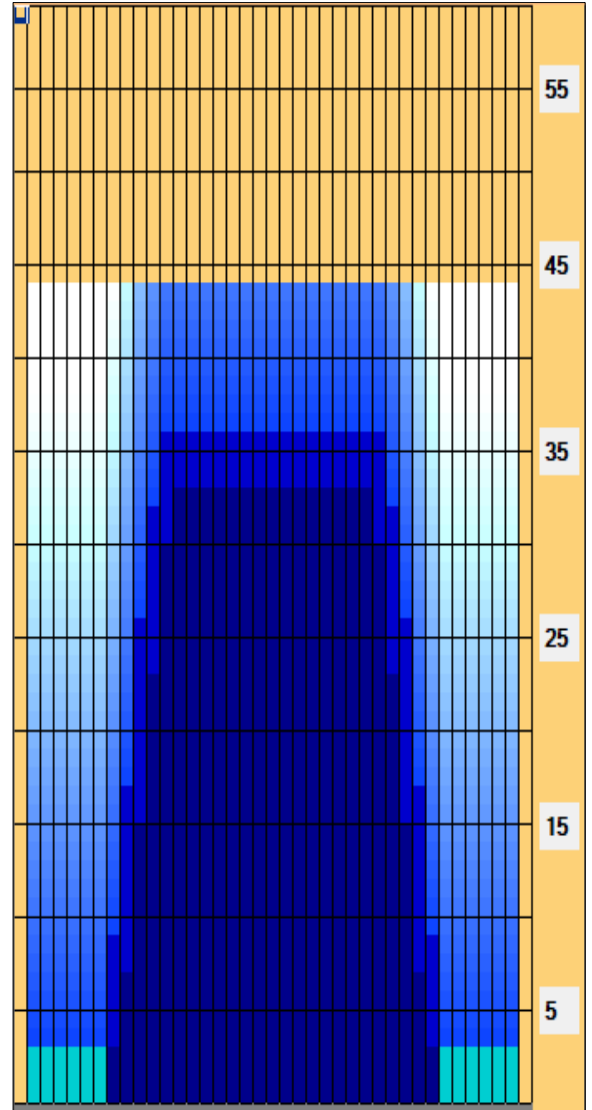
**Oil Pattern Distance:** 44 Feet      **Reverse Brush Drop:** 39 Feet      **Oil Per Board:** 50 uL  
**Forward Oil Total:** 17.15 mL      **Reverse Oil Total:** 10.6 mL      **Volume Oil Total:** 27.75 mL  
**Forward Boards Crossed:** 343 Boards      **Reverse Boards Crossed:** 212 Boards      **Total Boards Crossed:** 555 Boards

	Start	Stop	Loads	Speed	Crossed	Start	End	Feet	T.Oil
1	2L	2R	3	14	111	0.0	3.9	3.9	5550
2	9L	9R	2	14	46	3.9	7.8	3.9	2300
3	10L	10R	3	18	63	7.8	15.4	7.6	3150
4	11L	11R	3	18	57	15.4	23.0	7.6	2850
5	12L	12R	3	18	51	23.0	30.6	7.6	2550
6	13L	13R	1	18	15	30.6	33.1	2.5	750
7	2L	2R	0	22	0	33.1	39.0	5.9	0
8	2L	2R	0	26	0	39.0	44.0	5.0	0

Conditioner: \_\_\_\_\_  
 Type In or Select One  
 TransferType: \_\_\_\_\_  
 Type In or Select One

Forward  
 Reverse  
 Combined  
 Buff

	Start	Stop	Loads	Speed	Crossed	Start	End	Feet	T.Oil
1	2L	2R	0	30	0	44.0	36.0	-8.0	0
2	12L	12R	1	26	17	36.0	32.4	-3.6	850
3	11L	11R	2	22	38	32.4	26.2	-6.2	1900
4	10L	10R	3	22	63	26.2	16.9	-9.3	3150
5	9L	9R	3	18	69	16.9	9.3	-7.6	3450
6	8L	8R	1	14	25	9.3	7.4	-1.9	1250
7	2L	2R	0	14	0	7.4	0.0	-7.4	0



Item Description	3L-7L:18L-18R Outside Track:Middle	8L-12L:18L-18R Middle Track:Middle	13L-17L:18L-18R Inside Track:Middle	18L-18R:17R-13R Middle: Inside Track	18L-18R:12R-8R Middle:Middle Track	18L-18R:7R-3R Middle:Outside Track
Track Zone Ratio	8.33	1.74	1	1	1.74	8.33

